



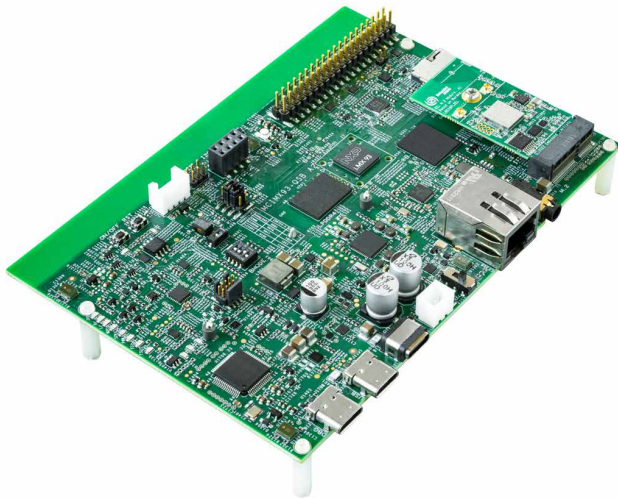
| SECURE CONNECTIONS
FOR A SMARTER WORLD |

QUICK START GUIDE

MCIMX93-QSB

MCIMX93-QSB

i.MX 93 Applications Processor platform



ABOUT THE i.MX 93 QSB

The i.MX 93 QSB (MCIMX93-QSB) is a platform designed to show the most commonly used features of the i.MX 93 Applications Processor in a small and low-cost package.

Features

- i.MX 93 applications processor with
 - 2x Arm® Cortex®-A55
 - 1x Arm® Cortex®-M33
 - 0.5 TOPS NPU
- LPDDR4 16-bit 2GB
- eMMC 5.1, 32GB
- MicroSD 3.0 card slot
- One USB 2.0 C connector
- One USB 2.0 C for Debug
- One USB C PD only
- Power Management IC (PMIC)
- M.2 Key-E for Wi-Fi/BT/802.15.4
- One CAN port
- Two channels for ADC
- 6-axis IMU w/ I3C support
- I2C Expansion connector
- One 1 Gbps Ethernet
- Audio Codec Support
- PDM MIC array support
- External RTC w/ coin cell
- 2X20 Pin Expansion I/O

GET TO KNOW THE i.MX 93 QSB

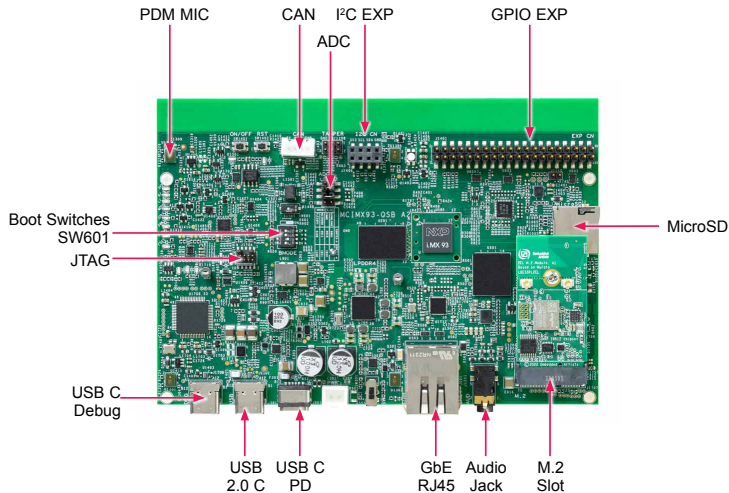


Figure 1: Top view i.MX 93 9x9 QSB board

GETTING STARTED

1 Unpacking the Kit

The MCIMX93-QSB is shipped with the items listed in Table 1.

TABLE 1 KIT CONTENTS

ITEM	DESCRIPTION
MCIMX93-QSB	i.MX 93 9x9 QSB board
Power Supply	USB C PD 45W, 5V/3A; 9V/3A; 15V/3A; 20V/2.25A supported
USB Type-C Cable	USB 2.0 C Male to USB 2.0 A Male
Software	Linux BSP image programmed in eMMC
Documentation	Quick Start Guide
M.2 Module	PN: LBES5PL2EL; Wi-Fi 6 / BT 5.2 / 802.15.4 support

2 Prepare Accessories

The following items in Table 2 are recommended to run the MCIMX93-QSB.

TABLE 2 CUSTOMER SUPPLIED ACCESSORIES

ITEM	DESCRIPTION
Audio HAT	Audio expansion board with most of audio features

GETTING STARTED continued

3 Download Software and Tools

Installation software and documentation are available at www.nxp.com/imx93qsb. The following are available on the website:

TABLE 3 SOFTWARE AND TOOLS

ITEM	DESCRIPTION
Documentation	<ul style="list-style-type: none">• Schematics, layout and Gerber files• Quick Start Guide• Hardware Design Guide• i.MX 93 QSB Board User Manual
Software Development	Linux BSPs
Demo Images	Copy of the latest Linux images that are available to program on to the eMMC. MCIMX93-QSB software can be found at nxp.com/imxsw

SETTING UP THE SYSTEM

The following will describe how to run the pre-loaded Linux image on the MCIMX93-QSB (i.MX 93).

1 Confirm Boot Switches

The boot switches should be set to boot from “eMMC”, **SW601**[1-4] are used for boot, See table below:

BOOT Device	SW601[1-4]
eMMC/uSDHC1	0010

Note: 1 = ON 0 = OFF

2 Connect USB Debug Cable

Connect the UART cable into the port **J1708**. Connect the other end of the cable to a PC acting as a host terminal. UART connections will appear on the PC, this will be used as A55 and M33 core system debugging.

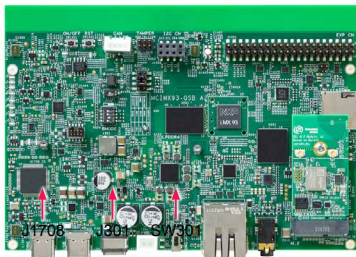
Open the terminal window (i.e., Hyper Terminal or Tera Term), choose the right COM port number and apply the following configuration.

- Baud rate: 115200bps
- Data bits: 8
- Parity: None
- Stop bits: 1

SETTING UP THE SYSTEM continued

3 Connect Power Supply

Connect the USB C PD power supply to **J301**, then power up the board by **SW301** switch.



4 Board Boot up

As the board boots up, you will see log information on the terminal window. Congratulations, you are up and running.

```
COM25 - Tera Term VT
File Edit Setup Control Window Help
uid=0 gid=0 euid=0 suid=0 fsuid=0 egid=0 sgid=0
fsuid=0 tty=(none) sess=1 comm="(systemd)" exe="/i
b/systemd/systemd" key=(null)
[ OK ] Finished File System Check on /dev/mmcblkp1.
1. Mounting /run/media/boot-mmcblkp1...
[ OK ] Mounted /run/media/boot-mmcblkp1.
[ OK ] Starting Save/Restore Sound Card State...
[ OK ] Finished Save/Restore Sound Card State...
[ OK ] Reached target Sound Card.
[ OK ] Started User Manager for UID 0.
[ OK ] Started Session c1 of User root.
[FAILED] Failed to start Weston, a compositor, as a
system service.
See 'systemctl status weston.service' for details.
NXP i.MX Release Distro 6.1-mickledore imx93evk ttyL
P0
imx93evk login:
```

ADDITIONAL INFORMATION

Boot Switches

SW601[1-4] is the boot configuration switch, the default boot device is eMMC/uSDHC1, as shown in Table 4. If you want to try other boot devices, you need to change the boot switches to corresponding values as listed in Table 4.

Note: 1 = ON 0 = OFF

ADDITIONAL INFORMATION continued**TABLE 4 BOOT DEVICE SETTINGS**

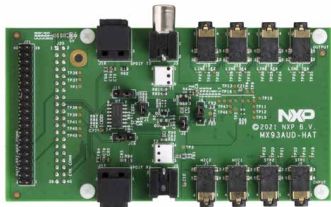
BOOT MODE	BOOT CORE	SW601-1	SW601-2	SW601-3	SW601-4
From internal fuses	Cortex-A55	0	0	0	0
Serial Downloader	Cortex-A55	0	0	0	1
USDHC1 8-bit eMMC 5.1	Cortex-A55	0	0	1	0
USDHC2 4-bit SD3.0	Cortex-A55	0	0	1	1
FlexSPI Serial NOR	Cortex-A55	0	1	0	0
FlexSPI Serial NAND 2K page	Cortex-A55	0	1	0	1
Infinite Loop	Cortex-A55	0	1	1	0
Test Mode	Cortex-A55	0	1	1	1
From internal fuses	Cortex-M33	1	0	0	0
Serial Downloader	Cortex-M33	1	0	0	1
USDHC1 8-bit eMMC 5.1	Cortex-M33	1	0	1	0
USDHC2 4-bit SD3.0	Cortex-M33	1	0	1	1
FlexSPI Serial NOR	Cortex-M33	1	1	0	0
FlexSPI Serial NAND 2K page	Cortex-M33	1	1	0	1
Infinite Loop	Cortex-M33	1	1	1	0
Test Mode	Cortex-M33	1	1	1	1

ADDITIONAL INFORMATION continued

DO MORE WITH ACCESSORY BOARDS

Audio Board (MX93AUD-HAT)

Audio expansion board with most of audio features



WiFi/BT/IEEE802.15.4 M.2 Module (LBES5PL2EL)

Wi-Fi 6, IEEE 802.11a/b/g/n/ac + Bluetooth 5.2 BR/EDR/LE + IEEE802.15.4, NXP IW612 chipset



SUPPORT

Visit www.nxp.com/support for a list of phone numbers within your region.

WARRANTY

Visit www.nxp.com/warranty for complete warranty information.

www.nxp.com/iMX93QSB

NXP and the NXP logo are trademarks of NXP B.V. All other product or service names are the property of their respective owners. © 2023 NXP B.V.

Document Number: 93QSBQSG REV 1 Agile Number: 926- 54852 REV A