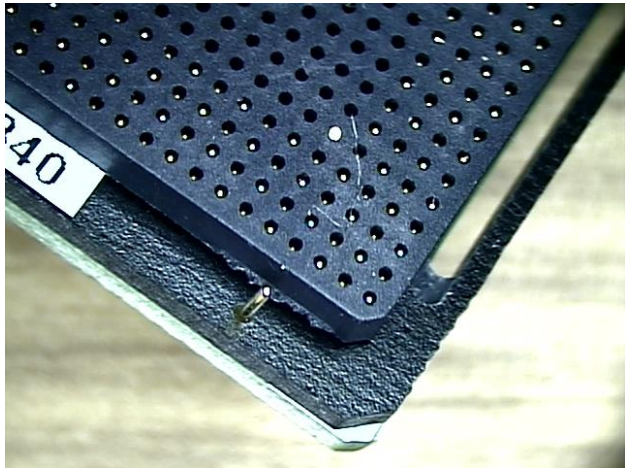
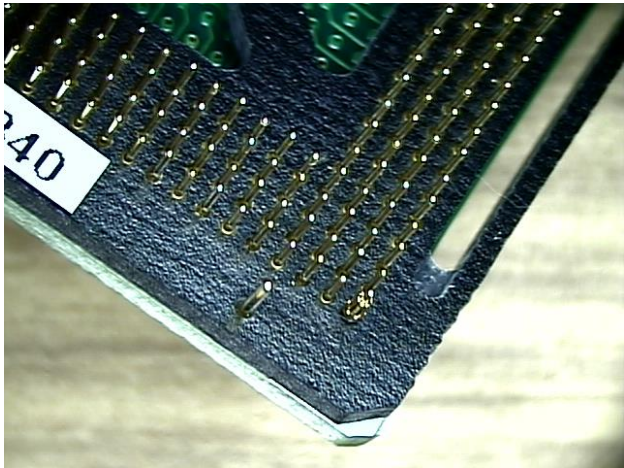




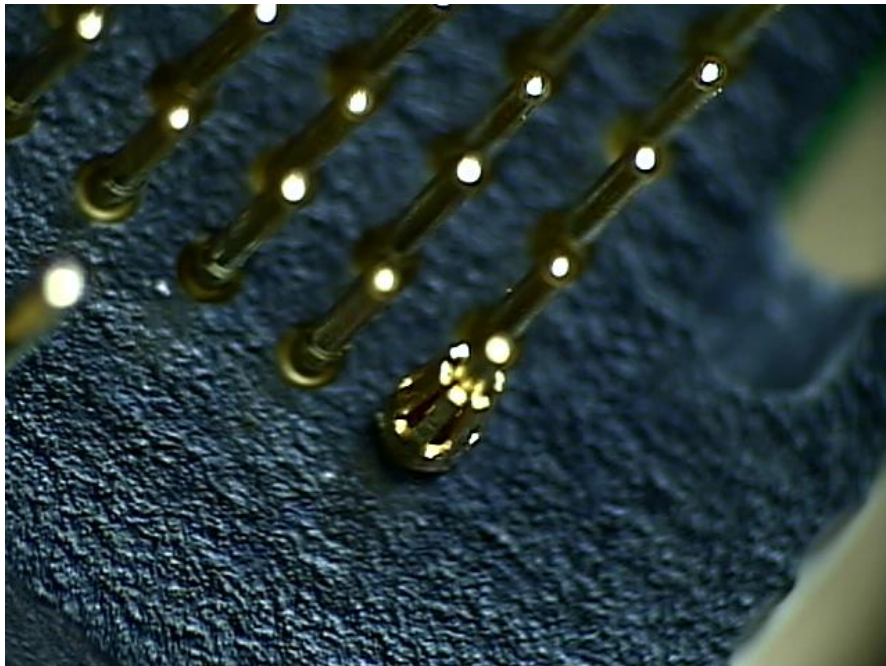
Notice: BGA components using “Pin Array’s” are shipped with a plastic Pin Protector Shroud installed. This device is held in place with pin sockets that are press-fit into the plastic Shroud. It is possible the individual pin sockets may loosen and detach from the Pin Protector Shroud and remain on the Pin Array BGA device. Please inspect the devices’ pins prior to inserting into your target.



BGA Pin Array Pin Protector Shroud installed



Pin Protector Shroud removed, pin socket remains



Close-up of pin socket left behind from Pin Protector Shroud removal.
This piece must be removed prior to installing device in your target! Use tweezers to remove pin socket.